

Please be sure to read the enclosed Shark® Owner's Guide prior to using your unit.

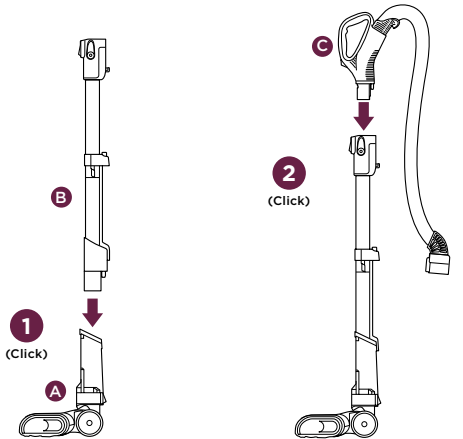
Shark® POWERED LIFT-AWAY®

QUICK START GUIDE

WHAT'S INSIDE

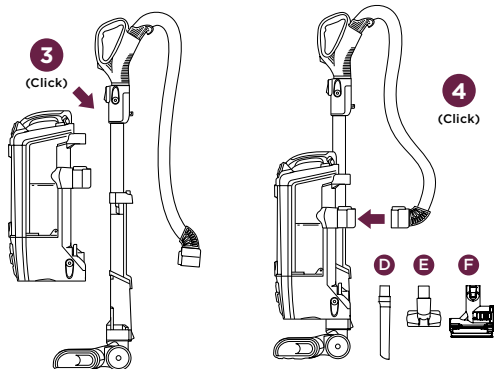
- A Motorized Floor Nozzle
- B Wand
- C Handle
- D Crevice Tool
- E Upholstery Tool
- F TruePet® Mini Motorized Brush

ASSEMBLY



Insert wand into motorized floor nozzle.

Insert handle into wand.

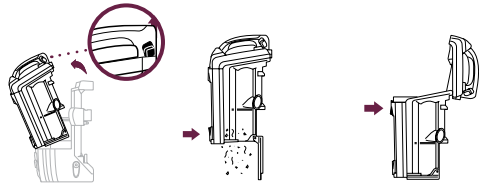


Place pod onto wand and slide down to connect.

Connect hose to back of pod, pressing until it clicks into place. Store accessories on the posts on the pod.

MAINTENANCE

Empty dust cup after each use

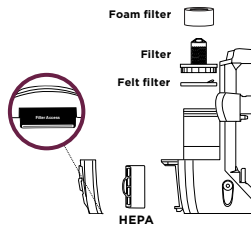


Pull up on dust cup release latch and lift dust cup off pod.

Hold dust cup over a trash bin and press the empty-release latch on the bottom.

Press top dust cup release latch to access dust screen and remove built-up debris as required.

Cleaning Filters



TIP:

Wash filters every 3 months to keep the suction strong.

Rinse filters with water only and allow them to air-dry completely. Tap loose dirt from foam filters as needed between washes.

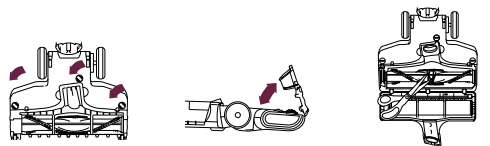
Pre-Motor (foam and felt):

With the dust cup removed, take out the foam and felt filters and rinse them with water.

Post-Motor (HEPA):

To access the HEPA filter, reach under the grill and pull the latch to remove the grill. Remove and rinse the HEPA filter.

Easy brushroll maintenance



Use a coin to open the 3 locks on the bottom of the floor nozzle.

Lift the hinged lid to access brushrolls.

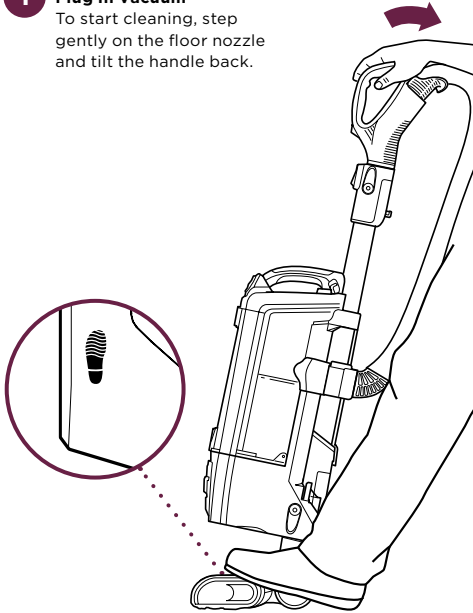
Remove any string, carpet fibers, or hair that may be wrapped around the brushroll. When finished, shut the lid, then close the 3 locks.

VERSATILE FLOOR-TO-CEILING CLEANING

FLOOR CLEANING

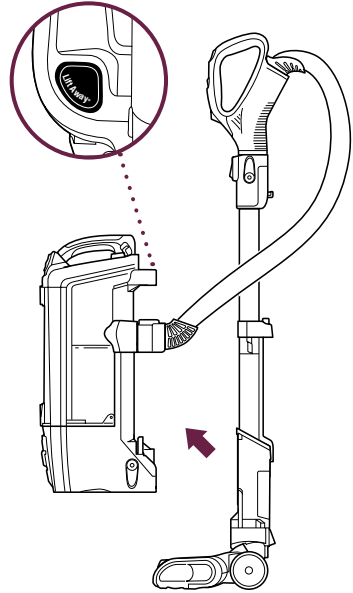
1 Plug In Vacuum

To start cleaning, step gently on the floor nozzle and tilt the handle back.



POWERED LIFT-AWAY® MODE

Press Lift-Away button to lift pod off floor nozzle. You are now ready to clean those hard-to-reach places.



2 Choose Setting

Slide the power switch to the appropriate floor setting and start cleaning.



Thick Carpet & Area Rug Cleaning

Set floor selector to Thick Carpet/ Area Rug.



Carpet and Low-Pile Cleaning

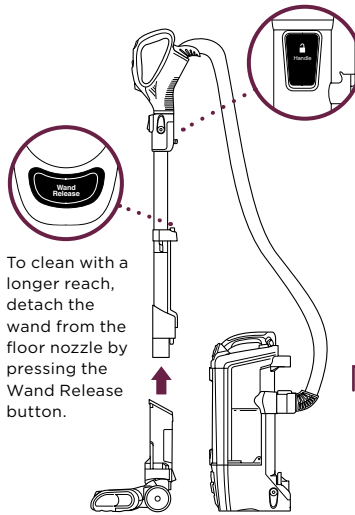
Set floor selector to Carpet/Low Pile.



Hard-Floor Cleaning

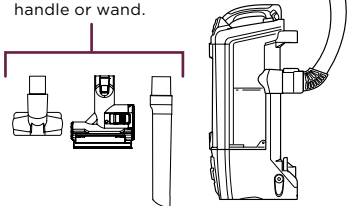
Set floor selector to Hard Floor.

LIFT-AWAY® ABOVE-FLOOR CLEANING



To clean above-floor areas with the handle, detach it from the wand by pressing the Handle button.

Attach any of the specialized cleaning accessories to the handle or wand.



NOTE:

For deep cleaning per ASTM F 608 (embedded dirt in carpets) please set to Carpet/Low Pile and Suction Control to MAX.

For questions or to register your product, visit us online at sharkclean.com

©2019 SharkNinja Operating LLC. TRUEPET, LIFT-AWAY, POWERED LIFT-AWAY, and SHARK are registered trademarks of SharkNinja Operating LLC.

NV752_QSG_Rev1_Mv2



@sharkcleaning